

PARAGON

state of the art precision...

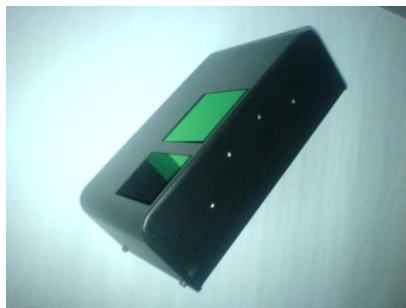
Industry Profile: **Electronics Industry**

Since 1987 our sheet metal division has been delivering high precision enclosures, display consoles, racking, instrumentation panels and computer cabinets to the electronics industry. A reputation for innovation in design for manufacture, quality, reliability and value has ensured that customers return, forging long term collaborations and partnerships.



With our years of experience of CNC Punching we have built up an extensive tooling library, often negating the need for expensive part tooling costs. Utilising our state of the art Amada high speed punching cell with 3metre x 1.5metre fully automated sheet handling we can offer 'lights out' operation providing cost effective, flexible production of high quality components

Our Amada EML, combined 4kw Laser / Punching cell provides us with the capability to produce highly intricate and accurate parts as either a stand-alone or larger manufacturing solution. Enclosures, special brackets, formed sections and equipment cases are manufactured utilising our Amada 7 axis , HFP Series Press Brakes.



Special features such as threads, dimples, notches are handled with ease and our 6 axis robotic welding with dual capacity for both MIG and TIG welding offer supreme precision, flexibility and consistency. While our Nordson fully automated powder coating plant, in-house assembly and packing facilities complete our one-stop solution to your manufacturing requirements



Electronics Industry

Paragon Precision Ltd

Head Office,
Harpings Road,
National Avenue,
Hull,
HU5 4JF, UK

T: +44 (0) 1482 497777
F: +44 (0) 1482 497776
E: info@paragonprecision.co.uk
W: www.paragonprecision.co.uk

PARAGON

state of the art precision...